

Shiloh

\$697,000



Innovative Distinctive Structures

Innovative Distinctive Structures (I.D.S. Homes) is known for producing the very best quality, performance and service. Our team, led by Gordy Boersma, creates the finest in residential design and construction.

We offer:

- Timeless Architecture
- Uncompromised Construction
- Extraordinary Design
- Outstanding Service
- Timely Performance
- Continuous On-site Supervision

We pride ourselves not only on the homes we have built, but also on the long lasting relationships we have developed with our clients.



Premier LifeStyle Realty
2802 Madison Square Drive, Suite 100
Loveland, Colorado 80538

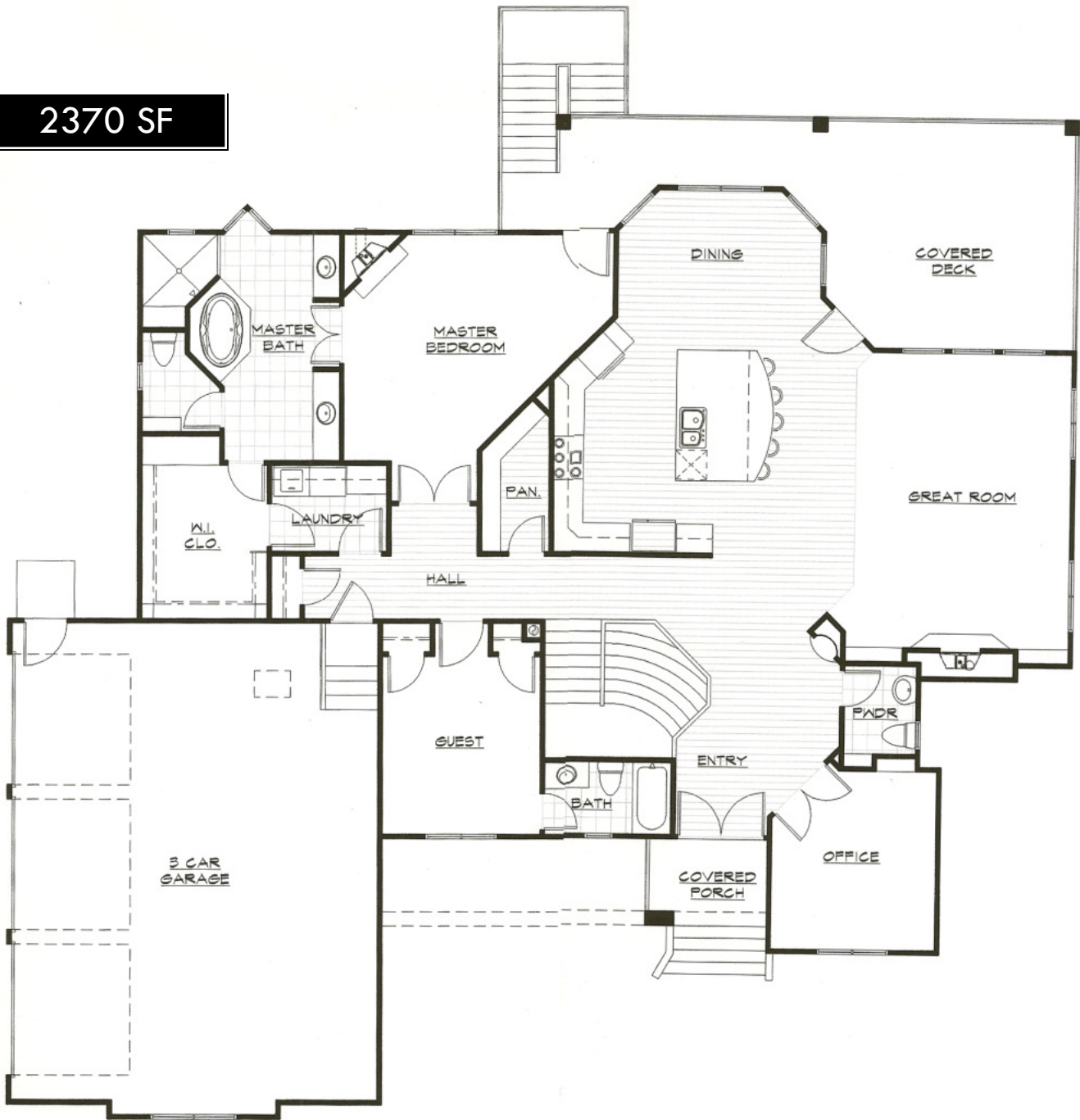
Ten minutes from town. . .

Contact John Mathey
Phone: 970.481.5512
info@PittingtonRanch.com
www.PittingtonRanch.com



A hundred years from civilization.

2370 SF



Standard Features

- Kwal paint on interior and exterior soffit and fascia
- Steel insulated garage doors with windows and one opener
- Oil rubbed bronze hardware
- Heavy duty closet rods
- Exterior weather barrier wrap on entire exterior of house
- Can lights in kitchen
- Freezer plug in garage on separate circuit
- Five cable/television outlets
- Five phone outlets
- Four 110 outlets in garage
- Two paddle fans with light package
- Two exterior hose bibs
- Two exterior G.F.I. outlets

- 3 cm granite countertops in kitchen and all bathrooms
- Tharp Knotty Alder Custom cabinets as per plan with euro hinges
- Complete stucco exterior excluding areas of stone or cedar
- Stone on exterior per plan
- Perimeter drain around entire foundation with sump pit
- Hickory or oak hardwood in kitchen, nook, entry, great room and halls
- Tile on all bathroom and laundry room floors
- Carpet and tile per I.D.S. Homes standard Mohawk cut berber, 12" x 12" porcelain tile and travertine in master bath
- Mirrors above all vanities, shower door on master shower, rods on all shower/tub combinations
- Concrete as per plan
- All labor and materials covered under standard I.D.S. Homes' one year warranty